



# Les Pins

## A cosy ski chalet with stunning views.

- Ski-in
- Located in the idyllic Sainte Foy, French Alps
- One double bedroom
- One triple bedroom
- One twin room
- Two bathrooms with baths & WC's
- Well appointed with wooden furniture and contemporary detailing
- Flat screen, DVD and CD player plus iPod station
- Very large terrace with spectacular views

Furnished in a contemporary style this state-of-the-art accommodation sleeps up to seven (plus baby cots if required).

Flat-screen TV with DVD player and iPod station.

Open plan kitchen.

Bathrooms include WC & baths.

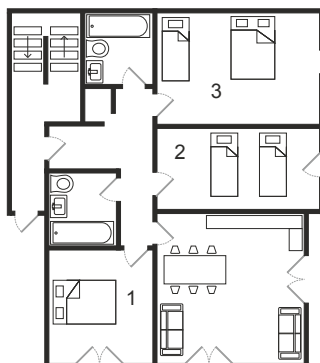
Sits at the foot of a red piste. Ski school, nursery slopes and main chair lift (plus bars and shops) just a couple of minutes walk from the door.

Airport transfers, pre-booked ski passes, childcare and ski hire equipment services available.

On-site car parking available, just one-and-a-half hour drive from Chambéry airport (Geneva 2½ hours).

Private Spa next door with massage service, sauna and hot tub.

Sainte Foy voted 'Best Family Ski Resort in the World' by The Sunday Times. Nearby resorts include Les Arcs chairlift (15 minutes), Tignes (20 minutes) and Val d'Isere (25 minutes).



NOT TO SCALE

### Contact:

0207 55 88 278

guest.services@ventureski.co.uk

www.ventureski.co.uk